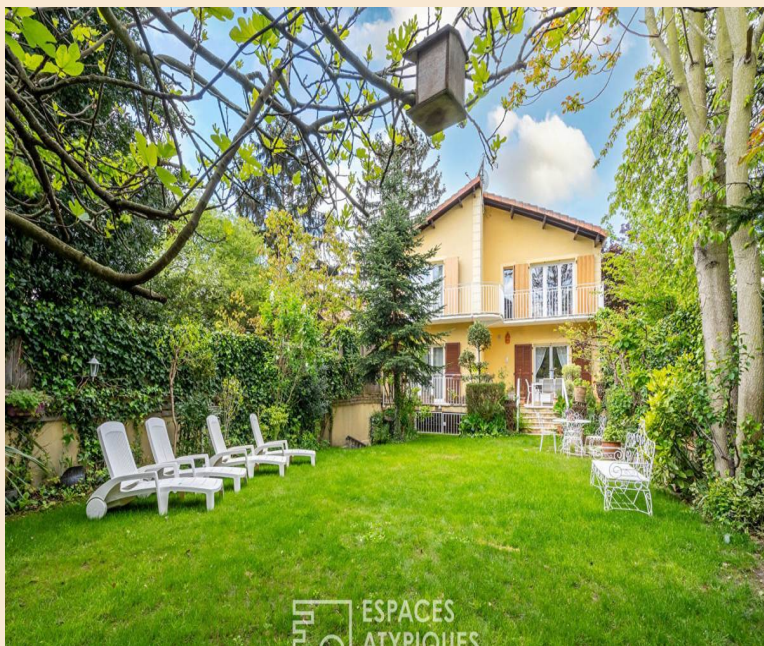


[Click to view MFH-PARIS11978](#)

Family home with landscaped garden

Sevrans , Seine-Saint-Denis , Paris Ile-de-France



€558,000

inc. of agency fees

5 Beds 2 Baths 200 sqm 0.06 ha

Located in the popular residential area of the Trèfles district, this 200 sqm house built in 2002 benefits from generous volumes, a 250 sqm landscaped...

At a Glance

Reference MFH-PARIS11978

Near to Sevrans

Price €558,000

Bed 5

Bath 2

Hab.Space 200 sqm

Land 0.06 ha

Pool No

Land Tax N/A

Property Description

Located in the popular residential area of the Trèfles district, this 200 sqm house built in 2002 benefits from generous volumes, a 250 sqm landscaped garden and a 100 sqm basement.

The entrance leads to a large 78 sqm living room bathed in light thanks to a beautiful orientation and large French windows providing continuous light throughout the day. This set, extended by a terrace, is arranged in several spaces such as a living room with a stone fireplace, a dining room and a large open kitchen, creating a warm and friendly atmosphere. This level also offers a 12 sqm office/games room as well as a separate toilet.

Upstairs, there are three spacious and bright bedrooms, a shower room with WC benefiting from a skylight, as well as a master suite with separate dressing room and a Mediterranean-style shower room with WC. All bedrooms have private balconies and French windows.

The ideally laid out 100 sqm basement benefits from high ceilings. A real asset that allows you to optimize the space according to your personal or professional projects.

At the back of the house, the perfectly maintained 250 sqm garden, quiet and not overlooked, gives an intimate and pleasant atmosphere.

The location, the beautiful volumes and the custom-made fittings make it a unique property close to all the amenities useful for family life.

The 561 sqm plot also has a large driveway at the front of the house, allowing several vehicles to be parked.

RER B: Sevrans-Livry 4 minutes by car and 15 minutes on foot.

Porte de Pantin: 20 min by cycle path.

City centre and town hall: 5 minutes by car.

Parc de la Poudrerie: also 5 minutes by car.

Canal de l'Ourcq: 5 minutes on foot.

Estimated average amount of annual energy expenditure for standard use, indexed to the years 2021, 2022, 2023: between EUR1,200 and EUR1,670 (subscription included).

Summary

| | |
|----------------|----------|
| Property type: | House |
| Bedrooms: | 5 |
| Bathrooms | 2 |
| Price | €558,000 |

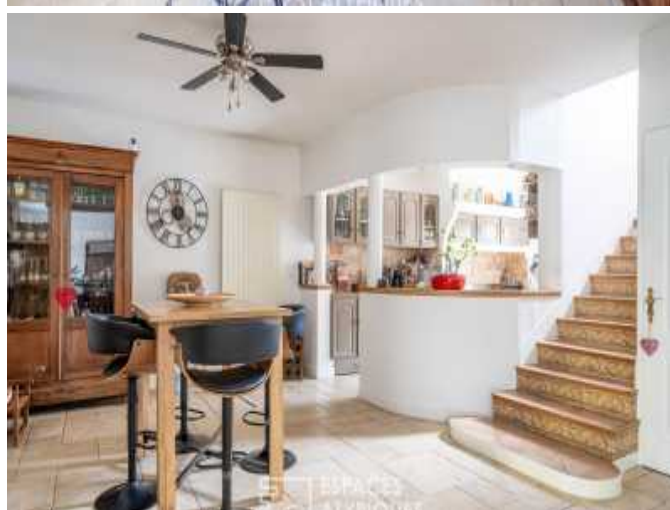
Key Information

| | |
|--------------------|---------|
| Year Built: | 2002 |
| Internal Area: | 200 sqm |
| Land Area: | 0.06 ha |
| Property Features: | |
| • Balcony: | 4 |
| Has a Garden | Yes |

Location: Paris Ile-de-France



Gallery







As Featured in

THE SUNDAY TIMES A Place in the Sun France The Sunday Telegraph THE GOOD property GUIDE Daily Mail Yorkshire Post FRENCH PROPERTY NEWS

Every property featured on our website is listed for sale at exactly the same price as it is in France, there's no premium for the superior service we offer.

We provide support based on our extensive experience and that of our bilingual experts to ensure that all aspects of your property purchase run smoothly.

Contact us on:

0845 123 5885 (UK only local rate) / +44 (0) 113 216 4066,

or email us at bonjour@my-french-house.com.

To see more great properties like this one, visit our daily updated website at www.my-french-house.com.

Buying French Property Just Got Easier...

The purchase process typically starts once you've visited a property with one of our agents and you made an offer on a property. Once your offer has been accepted, the property will come off the market and our local bilingual expert will liaise with you and the notaire. The compulsory searches are at the charge of the owner / vendor and are carried out at this stage.

You would have already been informed about the property taxes and legal fees (that incl. the stamp duty).

The agency fees are already included in the listed price on this document, there's no premium for the superior service we offer. You don't have to pay the deposit until the 'pre-contract' has been signed, and the 10 days cooling off period has expired. It takes an average of three months to buy a property in France.

For more information take a look at our **buying guide**, our **french mortgage** and **euro currency exchange** pages.

Testimonials

my-french-house was by far the best online guide I found – and I trawled them all – to buying a house in France. It answers all your first questions practically before you've thought to ask.

C. BAUER – Sunday Times

Our French property purchase and move to France were made so easy with the help and assistance of my-french-house.com. They are a committed and professional business – we highly recommend them.

S. and L. BROWN



Disclaimer: All properties and services on our website are based on information supplied by our agents, private individuals and other third parties. They are believed to be correct when entered into our systems and at the date this page is printed. Copyright ©2004-2025 my-french-house.com All Rights Reserved